



SUMMER 2018

quarter NOTES

A TONIC FOR MODERN ILLS!

A LETTER FROM THE Wheatland Board of Directors

To many of you the Wheatland Festival has become a family tradition. And why not – it is a beautiful, peaceful spot in rural Michigan. Not only do people return year after year, they bring new people with them! WMO is trying very hard to make purchasing a ticket as easy as possible. We hear your complaints. We acknowledge that there are hiccups in our current ticket tier system. We promise to work hard to fix the problems where we can.

Our ticket process is undergoing change. Change can be painful and difficult. Several years ago, we decided to reduce tickets sales due to overcrowding. We were transparent in the fact we were going to sell 1500 less tickets. Since then we have become the hottest ticket in town when spring rolls around. **Memberships have swelled so folks can begin to buy as soon as we begin member sales.** The first year we sold to the public in our normal method we sold out pretty much before Tier 2 could begin. For over twenty years there have been tiers and changes in price for each tier. Rather than raising the prices on everyone, the following year we decided to divide our tickets into three tiers to accommodate those that cannot commit to tickets in early spring. Still the rush for tickets jammed our phone systems and crashed our website. Some felt we were unprepared. We have the most bandwidth we can purchase in Remus! For years we have been hands-on regarding ticket sales – meaning we do not have an outside vendor selling our tickets. This process keeps scalpers from buying up all the tickets before you can.

Where do we stand now with tickets? We sell 6,700 adult and/or senior festival tickets every year.

Once member sales were done in April the number of tickets remaining were divided equally among the 3 tiers – 2,000 for each tier. We did not hold extra for Tier 3 in order to receive the higher price.

In addition to the 6,700 adult and senior tickets, there are over 3,000 comp tickets given out. Those go to the 1,000 + volunteers who are very instrumental in making this festival happen; performers and their guests; technical people; vendors; various committee members; year round volunteers; and the list goes on. Because we are a state licensed campground we are limited to the number of people we can have on site; thus the limited number of tickets. Wheatland is a not for profit corporation. We have a (paid) staff of three with a volunteer group of over 1000. Board members are not paid – we too are volunteers. The festival supports all of the activities throughout the year in keeping with our mission.

Some areas of the festival may still be looking for good volunteers. Good volunteers are always needed. Call our office (989-967-8879) for more information. We encourage you to volunteer and also become a paid member and support this great non-profit organization. Membership prices start at less than a dollar a week. By becoming a paid member you (1) help Wheatland; (2) get a ticket discount; (3) have the opportunity to purchase your ticket early.

Finally, please read your Wheatland emails and newsletters for information regarding 2019 ticket sales.

Happy Wheatland!

We look forward to seeing you at the farm!

INDEX

Letter from the Wheatland Board of Directors	1
Festival Sunday Tickets	2
Festival Parking	2
Wheatland Music Camp 2018.	2
T-Shirt design	3
Festival Performance Schedules	3
Service, Emotional Support and Therapy Animals	4
General Festival Guidelines	4, 5
Campsite Pickup	5
Photo Contest	6, 7
Wheat Futures	8





2018 WHEATLAND MUSIC CAMP

Photos by Michael Dwyer

It was a huge success.
Just see some of the attendee thoughts:

"I loved the chance to immerse myself in traditional music..." "The food was a highlight."
"Loved the all-inclusive feature – three meals, snacks, no clean-up, so we can focus on music and fun." "This is such a wonderful community....It makes it safe to bravely try new things." "Excellent teachers, varied options!"
"One on one sessions were outstanding!"

45th Annual

Wheatland

Sunday Tickets

Tickets for during the day on Sunday will be on sale at the gate. Sunday ticket sales begin at 8:00 AM, September 9, 2018, and are \$35 for adults/seniors and \$5 for children 5-12. Sunday tickets may be purchased in advance by calling the office, 989-967-8879, or visiting our web site wheatlandmusic.org/store, for \$33.

On Sunday Main Stage starts with a Gospel Sing, followed by performances by Thornetta Davis, Las Cafeteras, John McCutcheon, Darrell Scott, Altan, Steppin' In It and an exciting dance performance by Shift presenting Music and Dance Inspired by Appalachia. Additionally, there are performances on Centennial Stage, Song Stage and Kids Hill stage. Workshops will also be presented at Middle Ground, Kids Hill, Folk Instrument & Dulcimer Tents and in Workshop Lane. It is a fun-filled day packed with lots to see and do.

Weekend Parking

Handicap parking and/or camping is available to those with a handicap license plate or hanging handicap placard. There will be a crew designated to monitor those areas.

In our continued effort to keep festival attendees safe we will once again offer off-site parking across the road from the festival site. Once your campsite has been set up you can move your vehicle to that area.

Transportation back to the festival site will be available. Those taking advantage of the off-site parking will receive a parking voucher that can be used to enter a drawing for two (2) adult weekend tickets to the 2019 festival! Entries may be deposited at the Information Booth

"Quality instruction!"

"I plan to come to camp every year!"

"The camaraderie, the interaction in and outside of class brings enough support to pushing oneself into those uncomfortable zones where we learn."

The friendships that you make at camp will last through the years!

Music Festival

FRI. | SEPT. 7

MAIN STAGE

6:00 – 6:50	Joe Hall & the Cane Cutters
7:10 – 8:00	Corn Potato String Band
8:20 – 9:10	John McCutcheon
9:30 – 10:20	Kittel & Co
10:40 – 11:30	Front Country

CENTENNIAL STAGE

6:00 – 7:00	Nicholas James & Bandwagon
7:20 – 8:20	Elephant Rescue
8:40 – 9:40	Nora Jane Struthers
10:00 – 11:00	Jen Sygit
11:20 – 12:20	The Schrock Brothers

SONG STAGE

8:00-10:00 PM	Hosted Song Circle with Dan Hazlett
---------------	-------------------------------------

SAT. | SEPT. 8

MAIN STAGE

12:00-12:50	Kittel & Co.
1:10-2:00	Nora Jane Struthers
2:20-3:10	Charley Crockett
3:30-4:20	Steppin' In It
4:40-5:30	Altan
5:30-6:30	Dinner Break
6:30 – 7:20	Thornetta Davis
7:40 – 8:30	Darrell Scott
8:50 – 9:50	Shift – Music & Dance Inspired by Appalachia
10:10 – 11:00	Town Mountain
11:20 – 12:10	Las Cafeteras

SAT. | SEPT. 8 (cont.)

CENTENNIAL STAGE

11:30 – 1:00	Open Mic
1:20 – 2:10	Corn Potato String Band
2:30 – 3:30	Song Swap with Darrell Scott & John McCutcheon
3:50 – 4:50	Thornetta Davis
5:10 – 6:00	Las Cafeteras
6:00 – 7:00	Dinner Break
7:00 – 8:00	Diamonds in the Rust
8:20 – 9:10	Nora Jane Struthers
9:30 – 10:30	Rollie Tussing
10:50 – 11:50	Front Country
12:10 – 1:00	Steppin' In It

SONG STAGE

12:00-1:15 PM	How the Song Came to Be
1:25-2:05 PM	Emily Rose
2:15-2:55 PM	Andy Baker
3:05-3:45 PM	John Lamb
3:55-4:35 PM	Josh Rose
4:45-6:15 PM	Michigan Songwriters in the Round: Anne Heaton, Andy Baker, Emily Rose, Sam Corbin
8:00-10:00 PM	Hosted Song Circle (un-amped) Josh Rose

SUN. | SEPT. 9

MAIN STAGE

10:00 – 11:00	Gospel Hour
11:20 - 12:10	Thornetta Davis
12:30 - 1:20	Las Cafeteras
1:40 - 2:30	John McCutcheon
2:30 – 2:50	Kids Hill Parade
2:50 – 3:20	Shift – Music & Dance Inspired by Appalachia
3:40 – 4:30	Darrell Scott
4:50 – 5:40	Altan
6:00 – 6:50	Steppin' In It

SONG STAGE

12:00-12:40 PM	Sam Corbin
12:50-1:30 PM	Ann Heaton & Frank Marotta
1:40-2:20 PM	Jan Krist & Jim Bizer
2:30-3:10 PM	Annie & Rod Capps

2018
T-Shirt Design
by Morgan Lammers
of Traverse City



Welcome to the 45th Annual

Wheatland Music

As with all large gatherings there are some guidelines and rules that need to be followed in order to provide a safe, healthy and happy experience for those attending. You would have received an insert with your wristbands explaining them. Some of those are:

FRIDAY MORNING ON THE ROAD

- No parking on 50th between M20 and Pierce Rd
- No parking before a reasonable time Friday, Sept 7, 2018
- Respect the neighbor's property and privacy
- Stay in your vehicles while waiting in line.
- Be patient. We will let you in as soon as possible.

There is room for everyone

When you are on the road Friday morning waiting to enter, remember that State Laws apply. Once in the festival grounds, County Officers will be on-site for assistance.

We ask in advance that you respect the reasons we do this. As you enter the festival please cooperate with the safety volunteers out there who will work hard to help everyone find a comfortable place to camp.

FESTIVAL ENTRY AND CAMPGROUND RULES

- Remember, all vehicles and campers are subject to search when on the festival site.
- Pedestrians/Walk-ins will only be allowed after vehicle traffic clears.
- We ask that campers adhere to the "Squeeze Please" rule. Saving space for persons who have not arrived yet is not allowed.

SERVICE, EMOTIONAL SUPPORT AND THERAPY ANIMALS

WMO has received questions regarding whether service, emotional support, or therapy animals are allowed entry to the Wheatland Music Festival and other events. WMO follows the Americans with Disabilities Act (ADA) allowing trained service animals on site under the control of their owners. Emotional support animals and therapy animals are not considered service animals under the ADA and are not allowed entry. The same is true with service animals 'in training.' (Please see WMO's festival guidelines regarding pets.)

If you are attending a Wheatland event with a service animal, we want to make entry onto the Wheatland grounds as easy as possible for you, and also make the event experience enjoyable for everyone. If you intend to bring a service animal to the festival please:

1. Contact the Wheatland Music Organization (WMO) office and request a copy of the WMO Liability Agreement for Service Animals.
2. Complete and return the agreement, along with a copy of your animal's current rabies vaccination.

Once WMO receives that information we will send you a copy of federal guidelines regarding service animals, and a band you can affix to your service collar or harness during Festival. The band will show event workers that your service animal has already been cleared. You can also take care of the above at the Main Gate when you arrive, but pre-registering will make it much easier all around.

Thanks for your cooperation & Happy Wheatland!

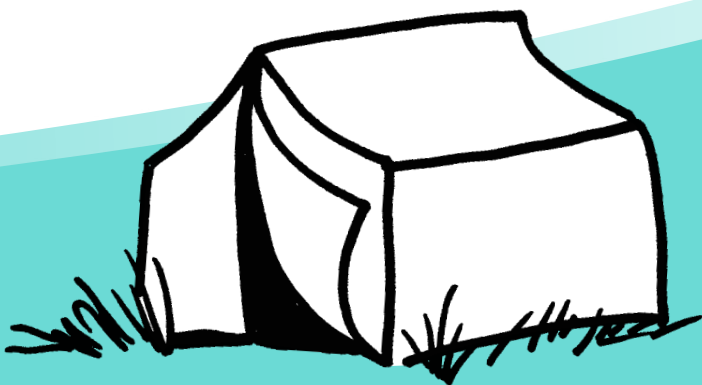
FESTIVAL MANAGEMENT COMMITTEE

Festival

- Please, stay on the gravel roads as much as possible when driving to your campsite.
- Please park the nose, tongue or front of your camper or motor home at the edge of the fire lane
- If you plan on drinking alcoholic beverages, please carry picture ID
- No bicycles or personal transportation devices other than those designated for handicap use.
- No open flame devices, unless designed for cooking
- Unauthorized vending, solicitation or dissemination of information is not allowed at the festival. Those who violate this will be asked to leave.
- No generators allowed.
- The use of heat-producing devices in all wooded areas is strictly prohibited.
- Cooking areas are provided on the perimeter of these areas.
- No portable structures in the concert seating area.
- No unmanned remote control vehicles or drones on festival site.

*We wish to thank you
for your cooperation.*

If you have any questions regarding these or any other WMO safety issues please let us know by calling 989-967-8879. Check our Facebook (www.Facebook.com/wheatlandmusicorganization) and our website (www.wheatlandmusic.org) for last minute changes due to weather. Thanks so much for your cooperation. A great festival depends on you.



CAMPSITE PACKUP

All campsites must be taken down and removed from the festival grounds no later than 9:00 PM on Sunday, unless authorization to remain longer is received and a permit affixed to the camp site.

Wheatland Music Festival

photo contest

1st
Place

**Kids Hill
Percussion Parade**

Photo by Angie Chase of Newaygo, Michigan



2nd
Place

**Wheatland Pickers
College Fund**

*Photo by Patti Matthews
of White Lake, Michigan*



3rd Place

Instrument Petting Zoo at Kids Hill

*Photo by Maggie Masters
of Grand Rapids, Michigan*



4th Place

We Be Jammin

*Photo by Cindy Scarpace
of Commerce Twp., Michigan*



5th Place

Early Morning Walk

Photo by Photo by Amber Nelson of Reed City, Michigan

quarter NOTES



The mission of the Wheatland Music Organization is to serve as a regional resource center for the preservation and presentation of traditional music and arts.

Wheatland Music Organization

P.O. Box 22, Remus, MI 49340

Phone (989) 967-8879 Fax (989) 967-8562 www.wheatlandmusic.org

PLEASE INFORM THE WMO OFFICE IF YOUR ADDRESS CHANGES. BULK MAIL NEWSLETTERS ARE NOT FORWARDED BY THE POST OFFICE.

Photos by Peggy Brisbane



Wheat Futures

AUGUST

Saturday, August 4
Volunteer Orientation
Classroom Building 9:00am

Saturday, August 11
WMO Jamboree
The Cabin 2:00pm

Tuesday, August 14
Board of Directors Meeting
Classroom Building 7:00pm

SEPTEMBER

Friday – Sunday, Sept. 7-9
45th Annual Wheatland Music Festival, Remus, MI
wheatlandmusic.org

Tuesday, September 18
Board of Directors Meeting
Classroom Building 6:30pm

OCTOBER

Saturday, October 6
Concert & Dance
with the Dixie Ramblers
Classroom Building 7:00pm

Tuesday, October 9
Board of Directors Meeting
Classroom Building 7:00pm

Saturday, October 13
Wheatscouts
Classroom Building 11:00am

WMO Jamboree
The Cabin 2:00pm

Saturday, October 20
Traditional Dance Season Kickoff:
5:30 Hayride, cider & donuts
6:00 Potluck & Youth Jam
7:00 Squares & Reels with
Blue Water Ramblers

NOVEMBER

Saturday, November 10
Wheatscouts
Classroom Building 11:00am

WMO Jamboree
The Cabin 2:00pm

Tuesday, November 13
Board of Directors Meeting
Classroom Building 7:00pm

Saturday, November 17
Traditional Dance:
Squares with Swollen Fingers
Calling by Mark Baumann
Classroom Building 7:00pm

DECEMBER

Saturday, December 8
Wheatscouts
Classroom Building 11:00am

WMO Jamboree
The Cabin 2:00pm

JANUARY

Tuesday, January 8
Board of Directors Meeting
Classroom Building 7:00pm

Saturday, January 12
Winter Wheat
The Intersection, Grand Rapids
12:30pm-Midnight

Wheatscouts
Classroom Building 11:00am

WMO Jamboree
The Cabin 2:00pm

Saturday, January 28
Traditional Dance:
Contra Dance with Hawks
& Owls, Calling by Polly
Classroom Building 7:00pm

IMPORTANT 2019 DATES:

Saturday, January 12
10th Annual Winter Wheat
at The Intersection in
Grand Rapids

Fri. – Sun., May 24-26
31st Annual Traditional Arts Weekend

Fri. – Sun., September 6-8
46th Annual Wheatland Music Festival